

HOS 247

ELD To Rely On

Prevent hours of service violations and stay FMCSA-compliant
with an easy-to-use electronic logging device.

www.hos247.com

HOS247 ELD - ELD Logbook To Rely On - © HOS247 LLC

Main Features

ELD Compliance and much more

Automatic HOS

Automatic hours of service calculation and violation alerts.
Automatic recording of driving time, miles, and locations.



Compliance Monitoring

Monitor your drivers' hours of service logs and DVIRs.
Receive alerts to prevent violations.

DOT Inspection Mode

Simply show logs on your phone or tablet.
No printer needed.



Fleet Tracking

Track your vehicles in real time and view their
location history.

Multiple HOS Rules

Compliant with multiple HOS rules including
Property/Passenger 60-hour/7-day & 70-hour/8-day.



IFTA reporting

Automatic IFTA state mileage reporting saves you
time and money.

Electronic DVIR

Vehicle inspection reports are created and
submitted in seconds.



Access Permissions

Manage permissions for fleet managers, compliance
officers, drivers, accountants, brokers, and customers.

www.hos247.com

HOS247 ELD - ELD Logbook To Rely On - © HOS247 LLC

ELD Components

Things You Need To Stay Compliant

Logging Device



HOS247 Electronic Logging Device plugs into a vehicle's ECM port and records driving hours and miles automatically.

Logbook App



HOS247 Logbook app connects to the Logging Device via Bluetooth or USB cable (if available) and displays HOS data to a driver.

Tablet/Smartphone



HOS247 ELDs are compatible with most modern Android/iOS (4G/LTE) tablets and smartphones. Optional tablets w data are available.

www.hos247.com

Install & Connect ELD

HOS247 ELDs are installed within minutes



Locate ECM (diagnostic) port

Locate an ECM (diagnostic) port inside of your vehicle. Look for 9-pin or 6-pin circular ports in heavy-duty vehicles. Look for OBDII port in light/medium-duty vehicles and heavy-duty Volvo/ Mack trucks.



Install ELD Hardware

Plug a cable into a vehicle's ECM (diagnostic) port and attach the other end to an ELD device. Mount the device on a dashboard.



Log into HOS247 Logbook App

Log into ELD Logbook App on your tablet/smartphone with a username and password created during a sign up process or provided by a fleet manager.



Connect ELD

Select a vehicle from a list of available vehicles and your device will attempt to connect to ELD via Bluetooth or USB (if available). Green indicator at the top right corner means you are ready to start using the ELD.

www.hos247.com

HOS247 ELD - ELD Logbook To Rely On - © HOS247 LLC

Driving with ELD



- ✓ Once ELD is connected, your driving time will be captured automatically.
- ✓ Once your vehicle is moving at 5 mph or more, your duty status is switched to Driving.
- ✓ Your logs and other features are not available while in Driving mode due to safety reasons.
- ✓ Once your vehicle is stopped, you may change your duty status by tapping on the status circle. The app will remind you to make a selection in 5 minutes. If no selection is made, your duty status will be switched to On Duty.



Hours

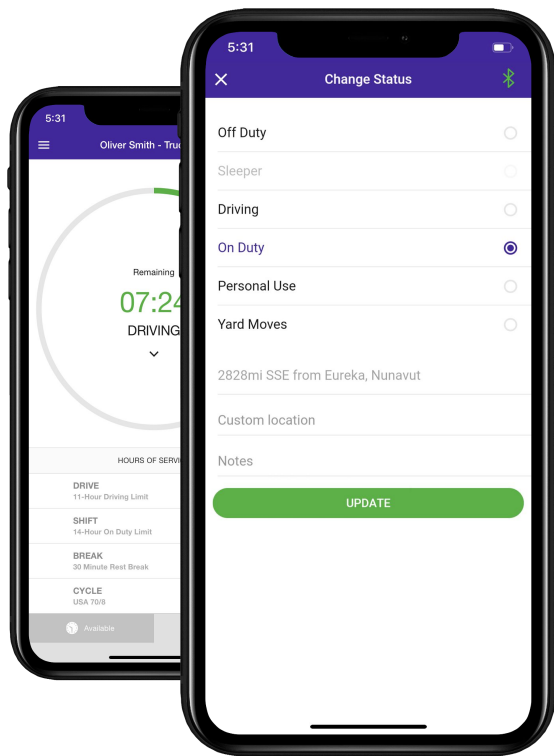
Available driving hours, required breaks, on-duty limits, and required off-duty time are calculated automatically.



Warnings

Visual notifications and sound warnings help drivers to avoid hours of service violations and stay compliant.

Duty Status



Set duty status with just two clicks. Status is updated automatically when driving starts or stops. The easy-to-use interface allows drivers to spend less time doing paperwork and more time driving. HOS247 simplifies training and prevents logbook errors.



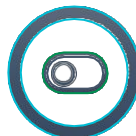
Current Status

Current duty status is always displayed on Status page inside of the status circle along with available hours.



Change Status

Tap the status circle, select your current status, add a note if necessary (i.e. pre-trip inspection) and press the “Update” button.



Personal/Yard

Personal Use Off-duty and Yard Move On-Duty statuses can be selected if pre-configured by a fleet manager via the web portal.

Logs

Managing logs has never been easier

Today's Log

Tap on TODAY's log to view & manage your current log.



Logs History

View past logs & violations if any. Tap on a log you would like to view or edit.



Graph Grid

Similar to paper logs, view your hours or service on the graph grid.



Statuses/Events

Tap on a specific status in the events section to view location and notes.



Edit/Insert Status

Press on "Pencil" to edit or "+" to insert a past duty status.



Certify Log

Tap "Certify" and sign your log when your shift ends.

DVIRs

Paper-free DVIRs save time for drivers

Add DVIR

Tap "+" to add pre-trip or post-trip inspection report



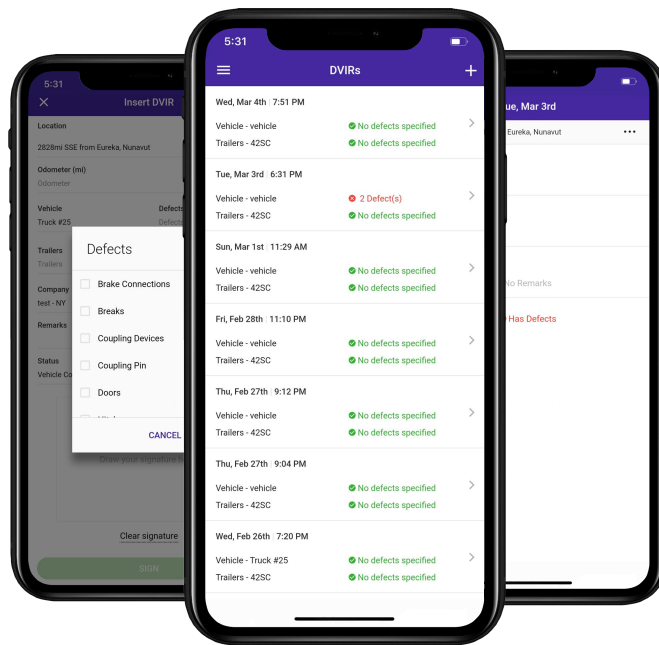
Defects

Select defects (if any) from the list and sign DVIR



Correct Defects

Notify mechanic if defects need to be corrected



Review last DVIR

Tap on DVIR to review and to confirm the issues have been resolved



DVIRs History

Review past DVIRs to prevent compliance errors



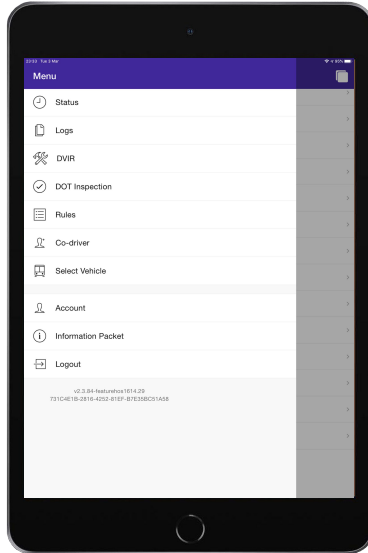
Edit DVIR

Tap "..." button to edit DVIR and to fix any errors

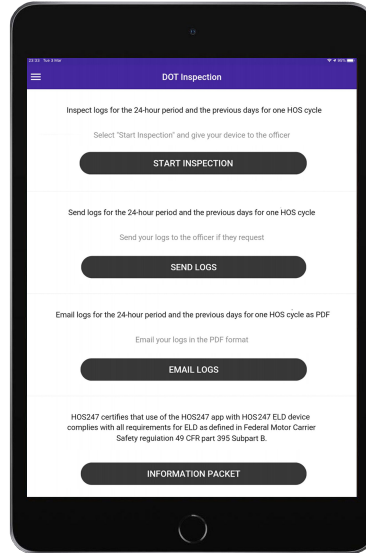


Easy to Use & to Navigate

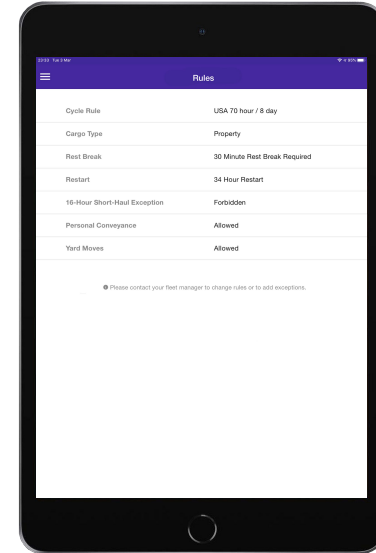
The most driver-friendly ELD interface on the market



Easy-to-Navigate &
Simple Menu



Tap "Start Inspection"
for DOT Mode



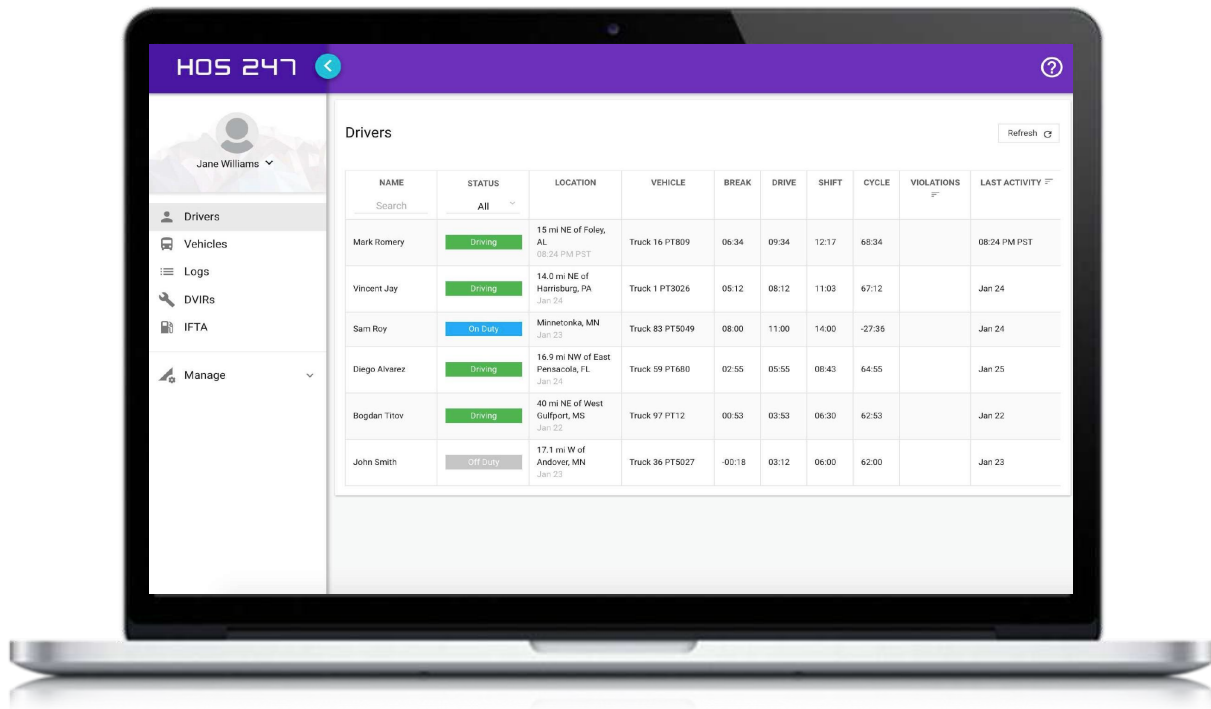
View HOS Rules and
Exceptions

www.hos247.com

HOS247 ELD - ELD Logbook To Rely On - © HOS247 LLC

Compliance Dashboard

Make sure your drivers stay compliant and productive



Current Status

View current statuses and locations of your drivers. Click on a driver to see details.



Real-Time Hours

View real-time hours to avoid violations and regulatory fines.



Violations

Monitor violations in real time and mitigate compliance risks.

Driver Details

Vincent Jay Edit Refresh

📞 555-345-2345 📧 john@usatrucking.com 🕒 USA Property 70 hour / 8 day 🔄 Last Update: JAN 21 4:00 PM EST

Hours of Service

STATUS	DATE	VEHICLE	LOCATION	BREAK	DRIVE	SHIFT	CYCLE
DRIVING	JAN 11 4:00 PM EST	Truck 29 - PT2929	14.0 mi NE of Harrisburg, PA	05:12	08:12	11:03	67:12

> Recap

> Map

Logs

Recent Log

DATE	HOURS DROVE	DISTANCE	VIOLATIONS & ERRORS
11 Jan 2017	2 hours	378 mi	

Last 14 Days More

DATE	HOURS DROVE	DISTANCE	VIOLATIONS & ERRORS
10 Jan 2017	10	321 mi	
11 Jan 2017	10	427 mi	
12 Jan 2017	10	368 mi	



Hours of Service

View current status and real-time hours. Available and reset hours are calculated automatically.



Driver Logs

View current log graph grid and last 14 logs. Click on a log to see log details. Click "More" to view historical logs.



Violations & Errors

Monitor violations and errors in real time. View past violations and mitigate compliance risks.



Details

View driver contact information, current or last known vehicle and location.

Logs

Make sure your drivers stay compliant and productive



View logs

View all current and past logs
(remove up to six months)



Filter

Filter by date or driver



Violations

Monitor violations in real time

The screenshot shows the HOS 247 application interface. The top navigation bar is purple with the text 'HOS 247' and a back arrow. Below the navigation bar, there is a user profile section for 'Jane Williams'. A sidebar menu on the left contains options: Drivers, Vehicles, Logs (highlighted), DVIRs, IFTA, and Manage. The main content area is titled 'Logs' and features a table with columns: DATE, DRIVER, HOURS DROVE, MILES DROVE, and VIOLATIONS & ERRORS. The table contains 16 rows of log data. Above the table, there are controls for 'Filter by Date' and 'Refresh'.

DATE	DRIVER	HOURS DROVE	MILES DROVE	VIOLATIONS & ERRORS
Jan 24	Mark Romery	11	293	
Jan 24	Vincent Jay	10	374	
Jan 24	Sam Roy	11	356	
Jan 24	Diego Alvarez	10	341	
Jan 24	Bogdan Titov	11	328	
Jan 24	John Smith	11	281	
Jan 23	Mark Romery	11	299	
Jan 23	Vincent Jay	11	410	
Jan 23	Sam Roy	11	335	
Jan 23	Diego Alvarez	10	357	
Jan 23	Bogdan Titov	11	372	
Jan 23	John Smith	11	434	
Jan 22	Mark Romery	10	308	
Jan 22	Vincent Jay	11	359	
Jan 22	Sam Roy	11	374	

Log Details

Tue Jan 24, 2017 01/24/2017

John Smith USA Property 70 hour / 8 day ✓ Certified ✓ No Violations

Log Form

General

Driver	Vincent Jay	Co-Driver	
Driver ID	35742	Co-Driver ID	
Driver Licence	D000034685038246741	ELD S/N	JD15774564
Driver Licence State	CA	ELD Manufacturer	HOS 247
Exempt Driver Status	No	Data Diagnostic Indicators	No
Unidentified Driving Records	No	ELD Malfunction Indicators	No

Vehicles & Trailers

VEHICLE	VIN	START END ODOMETER	DISTANCE	START END ENGINE HOURS
PT9393	ADR34543F36DA6	39564 - 39844	420 mi	758.2 - 765.7
TRAILERS	SHIPPING DOCS	CARRIER	MAIN OFFICE	HOME TERMINAL
2320	123456	USA Trucking	10921 Excelsior Blvd, Hopkins MN, 55343	10921 Excelsior Blvd, Hopkins MN, 55343

Log

Log Events

TIME (PST)	EVENT/ STATUS	LOCATION	ODOMETER	ENGINE HOURS	ORIGIN	NOTES
0:00	SB	49 mi NNE Fallon, NV	39564	758.2	Driver	
10:00	Login	49 mi NNE Fallon, NV	39564	758.2	Driver	
10:00	ODND	49 mi NNE Fallon, NV	39564	758.2	Driver	
10:50	ODND	49 mi NNE Fallon, NV	39564	758.2	Auto	
12:00	Driving	2 mi E Fernley, NV	39624	759.3	Auto	
13:00	Intl Location	3.5 mi SW Davis, CA	39684	760.3	Auto	



Log Form

Form and manner errors are displayed automatically.



Vehicles & Trailers

View vehicle & trailer information. Check shipping document numbers.



Log Events

Check log events. Click on an event to suggest an edit. Click "+" to suggest to add an event.

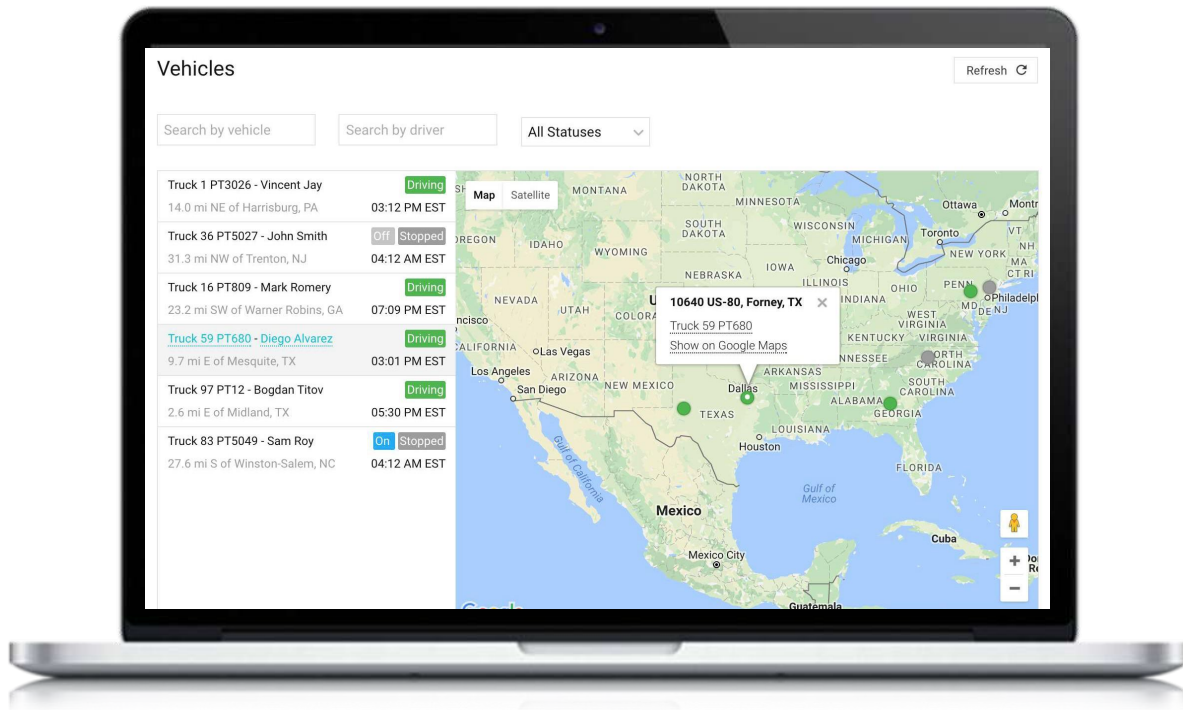


Log Date

Click on a calendar in the top right corner to change a date or click "<->" to switch between logs.

GPS Fleet Tracking

Accurate and reliable fleet tracking system



Fleet Tracking

Track your vehicles and view current locations in real time



Drivers Monitoring

Instantly know who is behind the wheel and monitor drivers' statuses



Issue Notifications

Receive real-time alerts for vehicle defects, diagnostic issues, nearing violations and occurred violations

Location History

Make sure your drivers stay compliant and productive



Breadcrumb Trails

View vehicle location history with breadcrumb trails



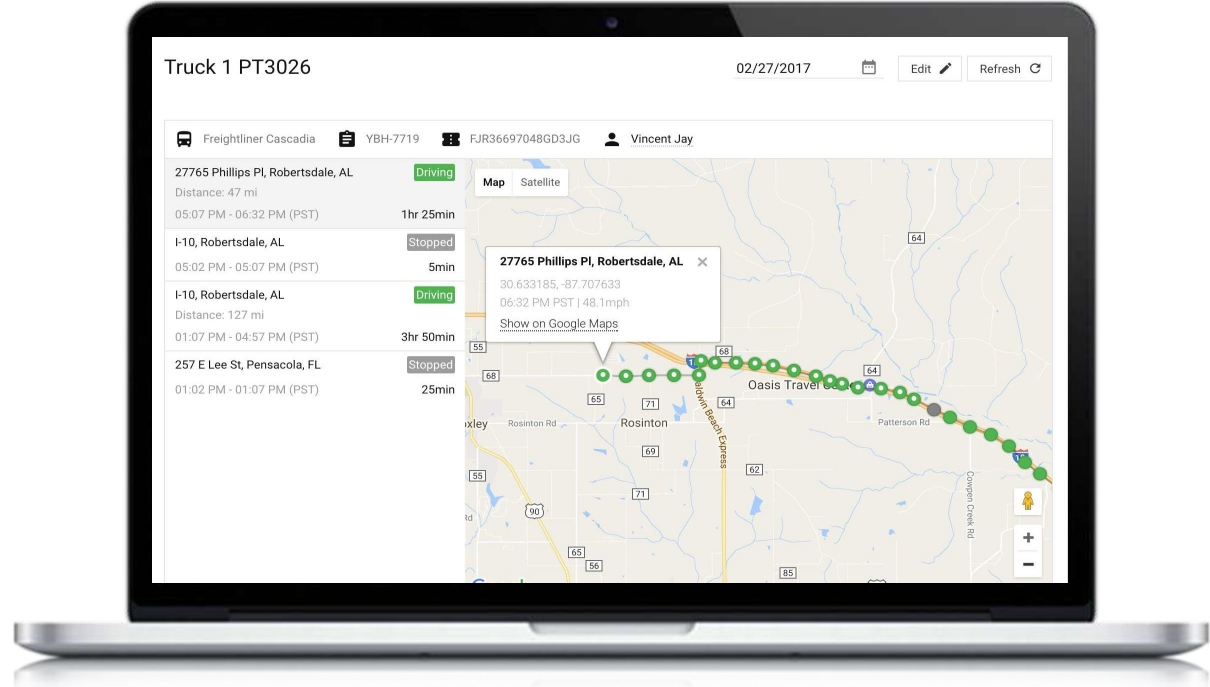
Route Points

Driving time and distance between stops is calculated automatically



Street View

View location surroundings via google maps



IFTA Reporting

The easiest, most complete IFTA miles reporting

The screenshot shows the IFTA Reporting interface on a laptop. The sidebar on the left includes a user profile for Jane Williams and navigation options: Drivers, Vehicles, Logs, DVIRs, IFTA, and Manage. The main content area is titled 'IFTA Report' and includes filters for Start Time, End Time, and a Refresh button. The data is presented in a table with two columns: STATE and MILES. The table is grouped by truck, with sections for Truck PT18872, Truck PT18496, and Truck PT15680. A 'Totals' section is also present at the bottom of the table.

STATE	MILES
Truck PT18872	
CA	564.4
MA	276.4
VA	980.7
AK	267.4
AL	732.9
CT	171.1
KS	711.9
MD	145.5
NJ	253.4
MN	99.2
Truck PT18496	
Truck PT15680	
Totals	
STATE	MILES
CA	564.4
MA	276.4
VA	1030.2
AK	710.5
AL	732.9
CT	171.1
KS	1487.3
MD	145.5
NJ	253.4
MN	658.5
OR	350.4



Vehicle Miles

Vehicle state miles are calculated automatically



Total Miles

Total miles per state are calculated automatically



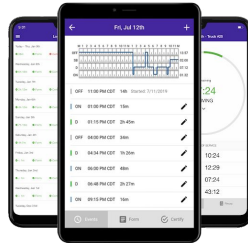
Calendar

Run miles report for a specific time frame, quarter or entire year

ELD Connectivity

Optional mobile devices and data plans

Mobile Devices



Optional Android 4G/LTE mobile devices improve connectivity and user experience.

ELD Data Plans



Optional 4G/LTE data plans provide reliable and affordable ELD connectivity.

More Features

More Features & Integrations



Messaging

Communicate with drivers
in real time



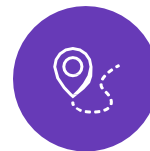
Documents

Electronically scan documents
and stay organized



Diagnostics

Receive fault code alerts
in real time



Trailer Tracking

Track your trailers current
location and location history



Loads

Find, schedule and optimize
loads via integrated partners



Dispatch

Dispatch your fleet via
integrated partners



Routing

Optimize your routes via
integrated partners



Parking

Find available truck parking and
more via integrated partners